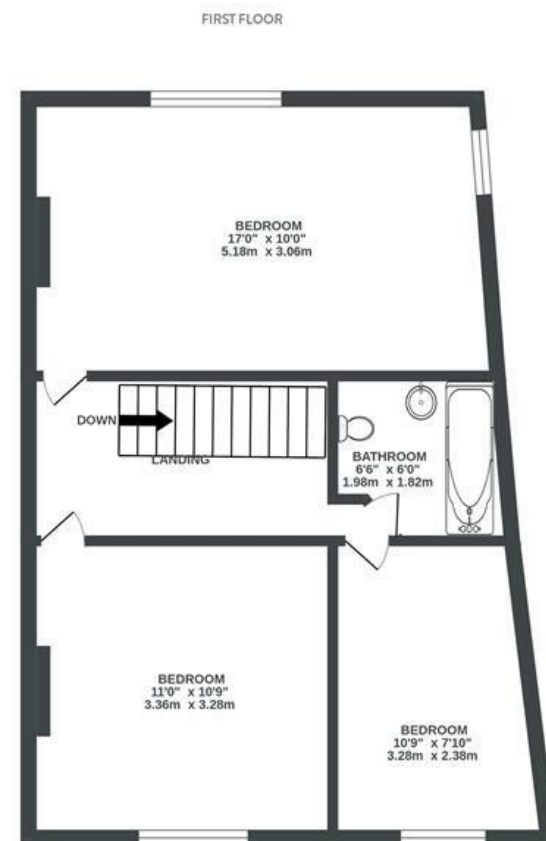
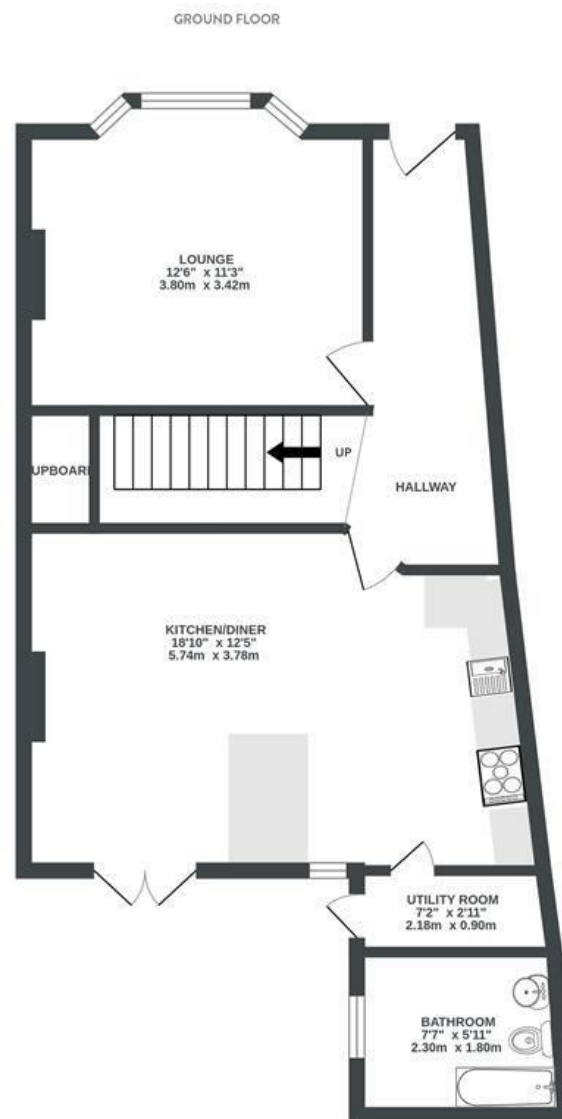


Pitt Road

HORFIELD

APPROXIMATE FLOOR AREA
92.5 SQM / 996 SQFT



Boardwalk

Pitt Road

, BRISTOL

£

£525,000



BS7 8TY

zzz

3 Bedrooms



2 Bathrooms

"In our time at Pitt Road we have finished professional training, lived through a pandemic, got married and had 2 children (with a third imminent) and we have loved living here. The ability to walk on to Gloucester Road has been such a luxury. So many good brunch spots and lovely restaurants on your doorstep. Horfield Common is a stones throw away and we've spent countless weekends there and having coffee at the Ardagh."

